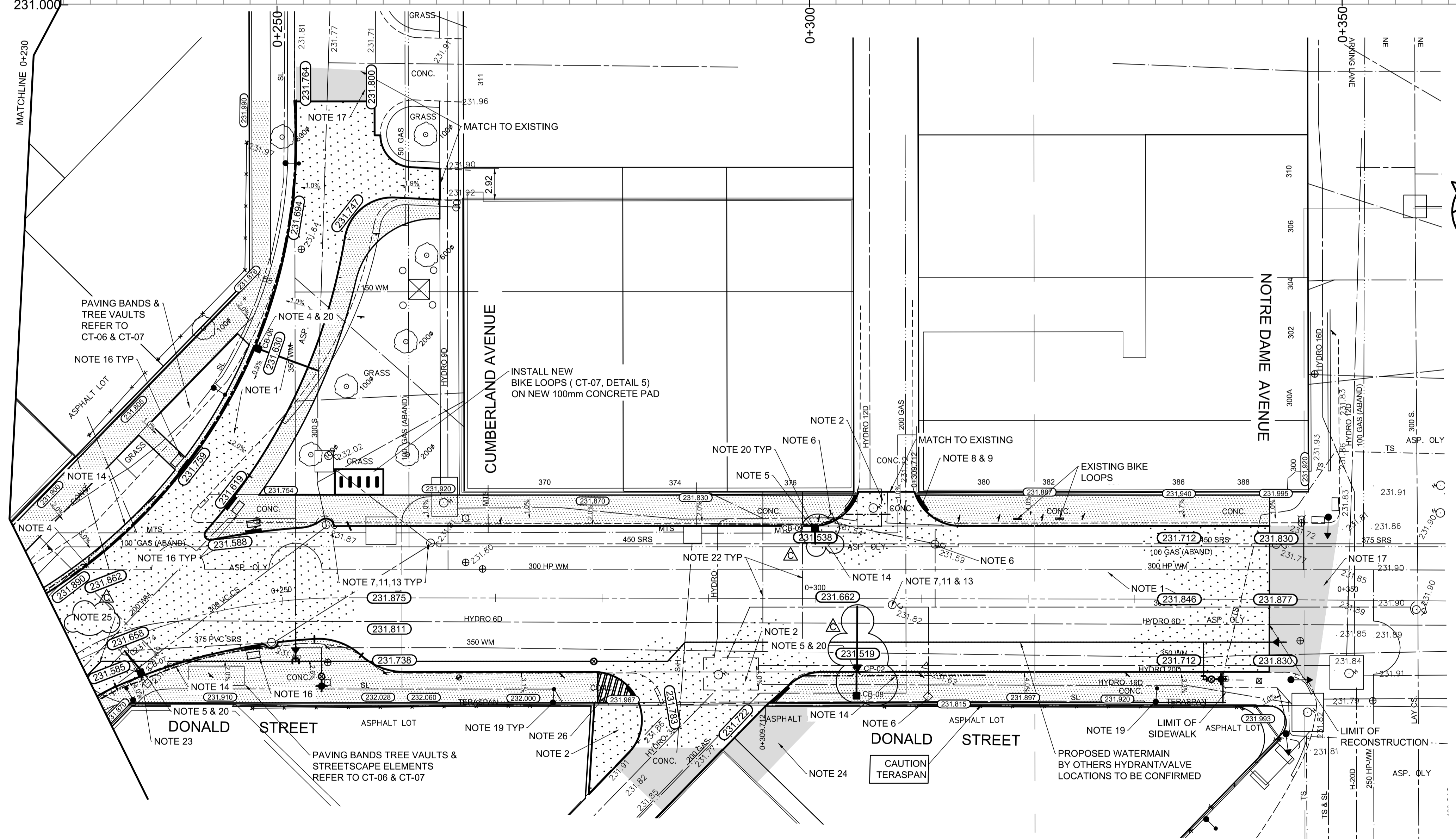


CB & CP TABLE

DESCRIPTION	RIM ELEV.	INVERT				TIE IN INV.	CONNECTION	LEAD
		EAST	WEST	NORTH	SOUTH			
CB - 06	231.630			230.030		228.300 +/-	300 CS LINED	6.0m 2500 @2% MIN.
CB - 07	231.585		229.985			229.300 +/-	EX. MH	2.5m 2500 @2% MIN.
CP - 02	231.519	230.519					NEW CB	2.5m 2500 @2% MIN.
CB - 08	231.810		230.47/230.21			229.200 +/-	300 CS	8.5m 2500 @2% MIN.
CB - 09	231.538	229.938				227.200 +/-	450 SRS	2.7m 2500 @2% MIN.

- REFERENCE NOTES
- PAVEMENT DIMENSIONS ARE TO BACK OF CURB
 - BASELINE IS CENTRELINE OF RIGHT-OF-WAY
 - PROPERTY LINES OBTAINED FROM THE CITY OF WINNIPEG L.B.I.S., AND NO SCALE FACTOR WAS APPLIED
 - REFER TO AECOM FIELD BOOK NO. 4987
 - REFER TO DWGS CT-06 AND CT-07 FOR STREETSCAPING ELEMENTS.
 - CATCH BASIN CONNECTIONS TO SEWER DESIGNED TO MAINTAIN PRE-CONSTRUCTION CAPACITY BY CATCH BASIN LEAD RESTRICTION AS INDICATED ON THE DRAWINGS. ADDITIONAL OR MODIFIED CONNECTIONS TO THE SEWER SYSTEM BEYOND THOSE INDICATED ON THE DRAWINGS REQUIRE REVIEW AND WRITTEN APPROVAL BY THE CONTRACT ADMINISTRATOR.
- CONSTRUCTION NOTES
- REMOVE EXISTING PAVEMENT INCLUDING CONCRETE STREETCAR BEDDING AND WOOD TIES AND RAILS, AND CONSTRUCT NEW 230mm PLAIN DOWELLED CONCRETE PAVEMENT c/w 180mm BARRIER CURB (SEPARATE)
 - CONSTRUCT NEW 200mm REINFORCED CONCRETE PAVEMENT
 - REMOVE EXISTING CONCRETE SIDEWALK/PAVER STONE SIDEWALK AND CONSTRUCT NEW 100mm SIDEWALK c/w PAVING STONE BAND (REFER TO DETAIL 4, CT-07) CONTRACTOR TO SAW CUT AT PROPERTY LINE FULL LENGTH OF PROJECT
 - INSTALL NEW CURB AND GUTTER INLET c/w CATCHBASIN (SD024). CONNECT NEW 250mm LEAD TO EXISTING LEAD, EXISTING COMBINED SEWER/MANHOLE OR STORM RELIEF SEWER
 - REMOVE EXISTING CATCHBASIN AND INSTALL NEW CURB AND GUTTER INLET c/w CATCHBASIN (SD-024). CONNECT NEW 250mm LEAD TO EXISTING LEAD, EXISTING COMBINED SEWER / MANHOLE OR STORM RELIEF SEWER
 - REMOVE EXISTING CATCHBASIN AND ABANDON EXISTING LEAD
 - REMOVE EXISTING FRAME AND COVER AND INSTALL NEW FRAME AND SOLID COVER (AP-006 & AP-007)
 - CONSTRUCT NEW MONOLITHIC CURB RAMP (10mm HT. INTEGRAL)
 - CONSTRUCT NEW MODIFIED BARRIER CURB (180mm HT. INTEGRAL) AS PER SD-203B AT ALL STREET/LANE INTERSECTION RADII
 - REMOVE EXISTING CURB AND GUTTER INLET AND LEAD
 - ADJUST EXISTING CATCHBASIN/MANHOLE FRAME AND COVER
 - ADJUST EXISTING WATERMAIN VALVE BOX TO GRADE
 - INSTALL NEW 50mm CAST IRON RISER RING
 - INSTALL 150mm SUBDRAIN 12m ON EACH SIDE OF CATCHBASIN
 - ADJUST EXISTING CURB STOP TO GRADE
 - INSTALL NEW DETECTABLE SURFACE WARNING TILES
 - MILL AND PLACE ASPHALT PAVEMENT (TYPE 1A)
 - EXISTING TRAFFIC SIGNALS POLE TO BE RELOCATED (BY OTHERS)
 - EXISTING STREET LIGHT POLE TO BE RELOCATED (BY OTHERS)
 - INSTALL FLOW RESTRICTOR PIPE 200mm PVC SDR 35 CENTER RESTRICTOR PIPE IN CB LEAD (SD-122)
 - ADJUST MANITOBA HYDRO / MTS MANHOLES (BY OTHERS)
 - INSULATE WATER SERVICES UNDER ROADWAY EXCAVATION AS PER (SD-18)
 - INSULATE CATCH BASIN COVER WATERMAIN (REFER TO DETAIL 6, CT-07)
 - REMOVE PAVEMENT AS REQUIRED AND PLACE ASPHALT PATCH
 - INSULATE SHALLOW WATERMAIN FROM STATION +75 TO STATION +245 AS PER SD-18
 - REINFORCED 200MM CONCRETE PAVEMENT



EXISTING	LEGEND - PLAN	PROPOSED	EXISTING	LEGEND - PLAN	PROPOSED	EXISTING	LEGEND - PROFILE	PROPOSED
150 mm W.M.	WATERMAIN	150 mm W.M.	HYDRO	HYDRO	HYDRO	— X —	C PROFILE	— X —
300mm L.D.S.	LAND DRAINAGE SEWER	300mm L.D.S.	CONCRETE	CONCRETE	CONCRETE	— □ —	WEST GUTTER	— □ —
250mm W.W.S.	WASTEWATER SEWER	250mm W.W.S.	ASPHALT	ASPHALT	ASPHALT	— ○ —	EAST GUTTER	— ○ —
○	MANHOLE	●	PROPERTY LINE	PROPERTY LINE	PROPERTY LINE	— — —	NW PROPERTY LINE	— — —
□	CATCH BASIN	■	SURVEY BAR	SURVEY BAR	SURVEY BAR	— + —	S/E PROPERTY LINE	— + —
▽	CATCH PIT	▼	ELEVATION	ELEVATION	ELEVATION	— 35.750 —		
↑	TRAFFIC SIGNAL POLE	↑	TREE	TREE	TREE	— ○ —		
↑	STREET LIGHT	↑	SIDEWALK RAMP	SIDEWALK RAMP	SIDEWALK RAMP	— ▽ —		
—	GAS	—	CONCRETE SIDEWALK	CONCRETE SIDEWALK	CONCRETE SIDEWALK	— ▨ —		
—		—	FENCE	FENCE	FENCE	— ▩ —		

LOCATION APPROVED UNDERGROUND STRUCTURES

SUPV. U/G STRUCTURES COMMITTEE DATE

NOTE: LOCATION OF UNDERGROUND STRUCTURES AS SHOWN ARE BASED ON THE BEST INFORMATION AVAILABLE, BUT NO GUARANTEE IS GIVEN THAT ALL EXISTING UTILITIES ARE SHOWN OR THAT THE GIVEN LOCATIONS ARE EXACT. CONFIRMATION OF EXISTENCE AND EXACT LOCATION OF ALL SERVICES MUST BE OBTAINED FROM THE INDIVIDUAL UTILITIES BEFORE PROCEEDING WITH CONSTRUCTION.

B.M. ELEV. S.W. Cor. Notre Dame Ave. & Hargrave St., Tall. in N. conc. found. No. 440 Hargrave St., 1m W. & 0.3 m below Tyndall Stone of N.E. Cor. of Bldg.

AECOM

DESIGNED BY TLF CHECKED BY TDW

DRAWN BY PPI/PB APPROVED BY KWR

HOR. SCALE: 1:250 RELEASED FOR CONSTRUCTION BY:

VERTICAL: 1:10 DATE DATE

ENGINEER'S SEAL: T.L. FINDLAY Member 23820

CONSULTANT DRAWING NO. CT-05

THE CITY OF WINNIPEG

Winnipeg PUBLIC WORKS DEPARTMENT ENGINEERING DIVISION

DOWNTOWN BIKE LANE SYSTEM AND STREET IMPROVEMENT

PAVEMENT RECONSTRUCTION STATION 0+230 TO NOTRE DAME AVENUE

CITY DRAWING NUMBER P-3488-05 SHEET 05 OF 07